

Advanced Dashboard for Currency Strength and Speed

USER MANUAL

This indicator is part of a complete trading strategy!

!!! Get the Complete Currency Strength Market Overview !!!

The [28Pairs Currency Strength Trading System](#) - also known as Double-GAP Strategy - is our primary trading philosophy and is based on exploiting individual currency strength and weakness. Please [click here](#).

Serious traders know that currency strength trading is the most lucrative form of trading because of the choice of pairs combined with strength and weakness.

What is [Dashboard for Currency Strength and Speed](#)?



This DASHBOARD is very powerful piece of software working on 28 currency pairs. It is based on 2 of our main indicators (ACS28 and Impulse). It gives a great overview of the entire Forex Market. It shows Advanced Currency Strength values, currency speed of movement and signals for 28 Forex pairs in all (9) time-frames.

<https://youtu.be/7H-fhQZBDak>

Imagine how your trading will improve when you can watch the entire market using a single indicator on your chart to pinpoint trends and or scalping opportunities?

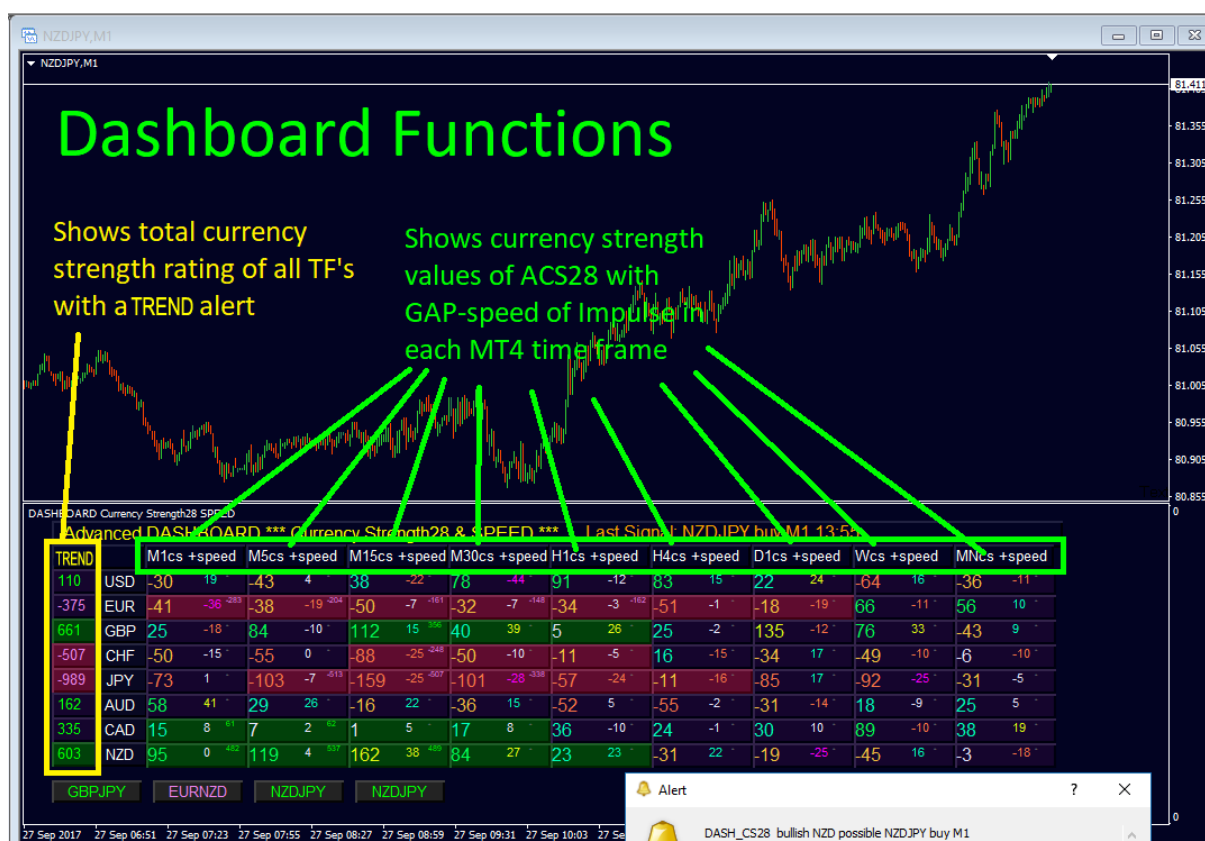
We have built features into this indicator that make it even easier for you to identify strong and weak currencies, while identifying and confirm potential trades. This indicator shows graphically whether a currency's strength or weakness is increasing or decreasing and how it performs in all time-frames.

An added new features are the dynamic Market Fibonacci Levels which adapt to current market conditions change, a proven plus already used in our [ACS28](#) and [Impulse](#) indicators.

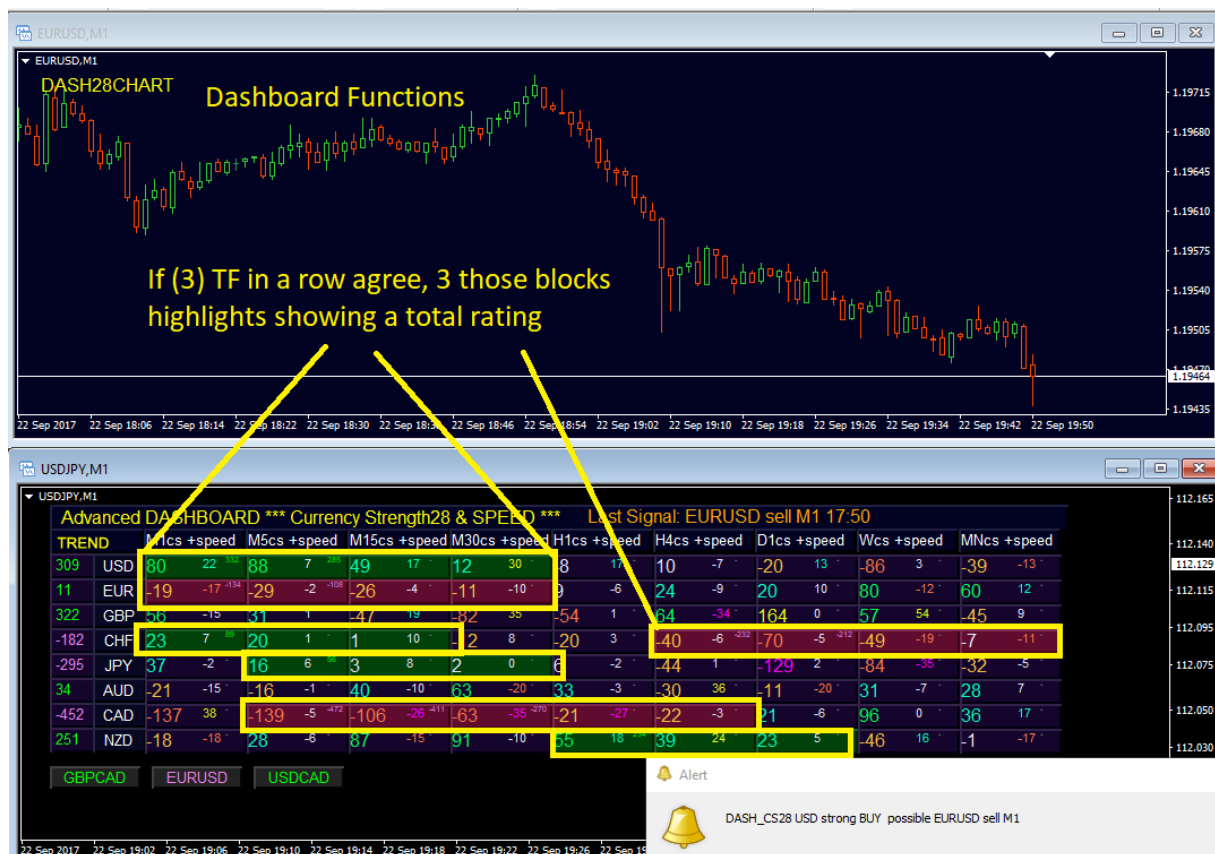
Always pair a weak and a strong currency when trading and this new indicator will help you do just that.

Features:

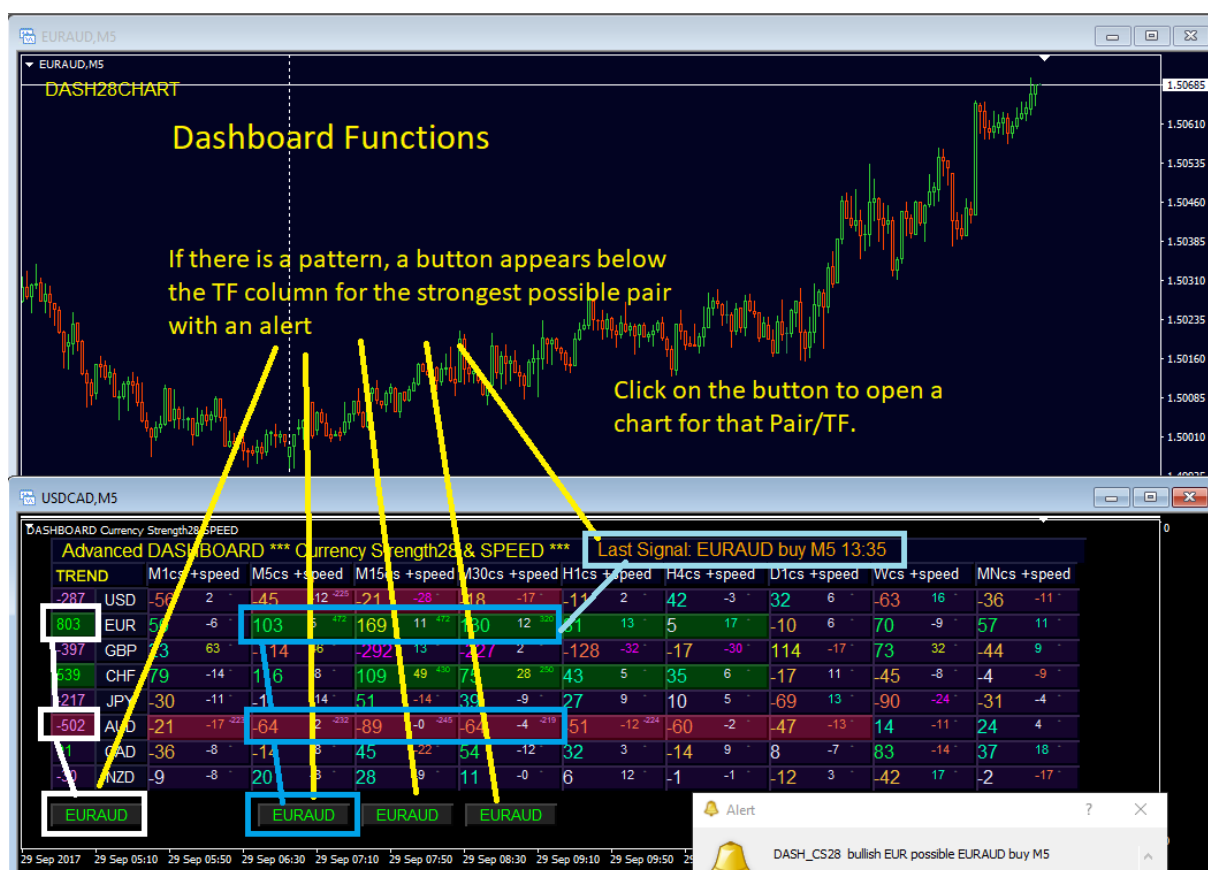
1. Shows currency strength values of ACS28 and GAP-speed (Impulse) in each timeframe.
2. COLUMNS: Shows color coded values for weak, strong, extreme.
3. LEFT COLUMN: Shows TREND currency strength rating of all time-frames with a TREND alert.
4. If (3) timeframes in a row agree, 3 those blocks highlights showing a total rating.
5. (NEW with version 1.4) Add a higher timeframe momentum (speed) filter.
6. If there is a pattern, a button appears below the timeframe column for the strongest possible pair with an alert.
7. Click on the button to open a chart for that Pair/timeframe.
8. Quick chart buttons: Click 2 currency names to open any pair in a new window.
9. Auto update quote charts for all 28 pairs and TF's will keep all MT4 data current.



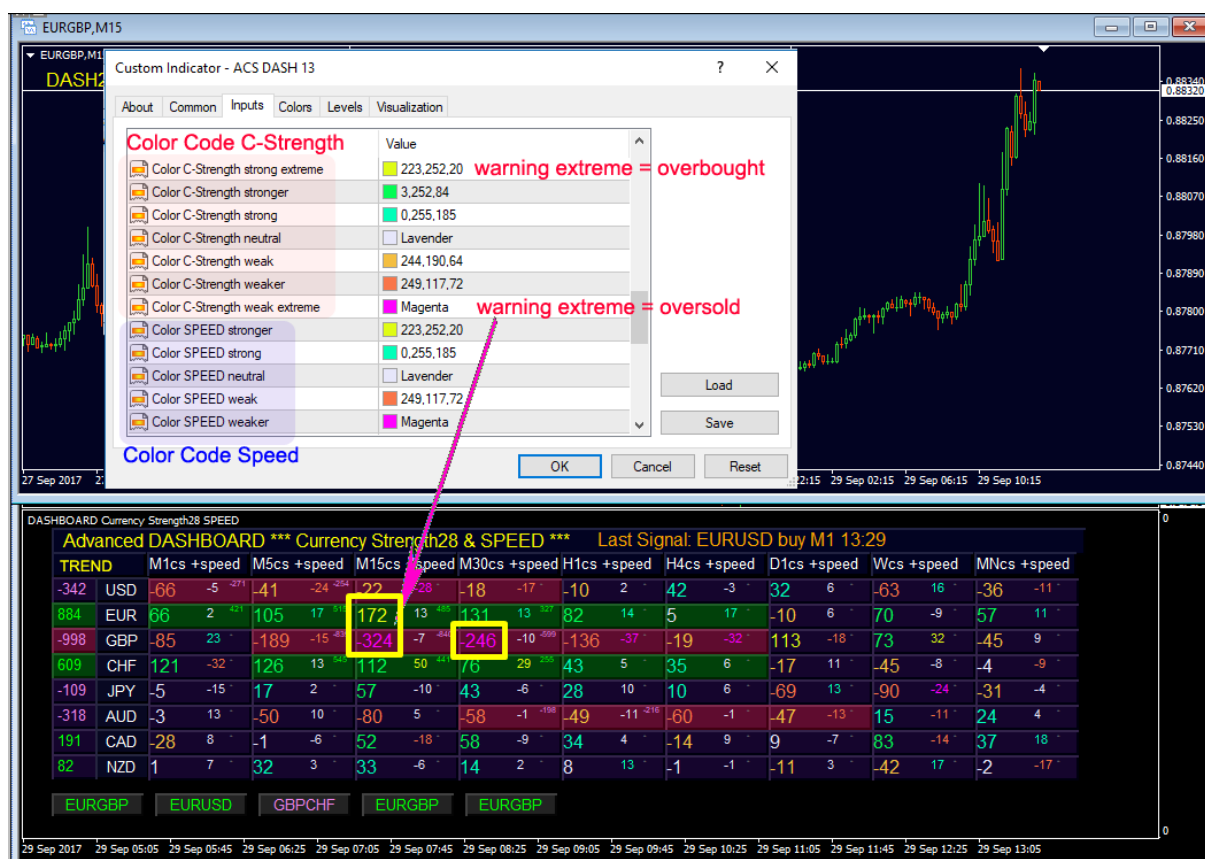
Picture above; The COLUMNS shows from left to right: Currency-TREND, Currency Names, M1 Currency Strength and Currency SPEED and if highlighted a 3-block rating, then followed for all other timeframes M1, M5, M15, M30, H1, H4, D1, W, MN.



Picture above; The ROW shows: Multi-timeframe currency-strength and speed analysis. A ROW is highlighted if 3 or more BLOCKS agree.



Picture above; The PATTERN: If there is a 3-ROW blocks of opposite values (green=bulls, red=bears) a button will show below the timeframe column with a suggested pair (green=buy, red=sell). If there are multiple results the one with the strongest rating will be chosen. An Alert will then popup. The last Alert is also printed in the first row with the time in orange. You can choose between broker time and your local computer time. Click on the button to open the symbol with the matching timeframe.



Picture above; The Color Code shows: Currency-Strength 7 colors: strong extreme/stronger/strong/neutral/weak/weaker/weak extreme. Pay attention to the extreme levels (Yellow and pink). Pullbacks are expected when Currency-Strength levels reaching higher then 161/261 or lower then -161/-261 of the dynamic Market Fibonacci levels (which are printed in the dashboards numbers). This might be a good time to take profits or to trail the SL into profit. Scalpers can watch out for pullback trades when speed (second number) is inverting the Currency-Strength. The extreme levels are optimized for each timeframe because Minute charts are more volatile then Daily, Weekly, Monthly (See settings below).

(NEW with version 1.3)

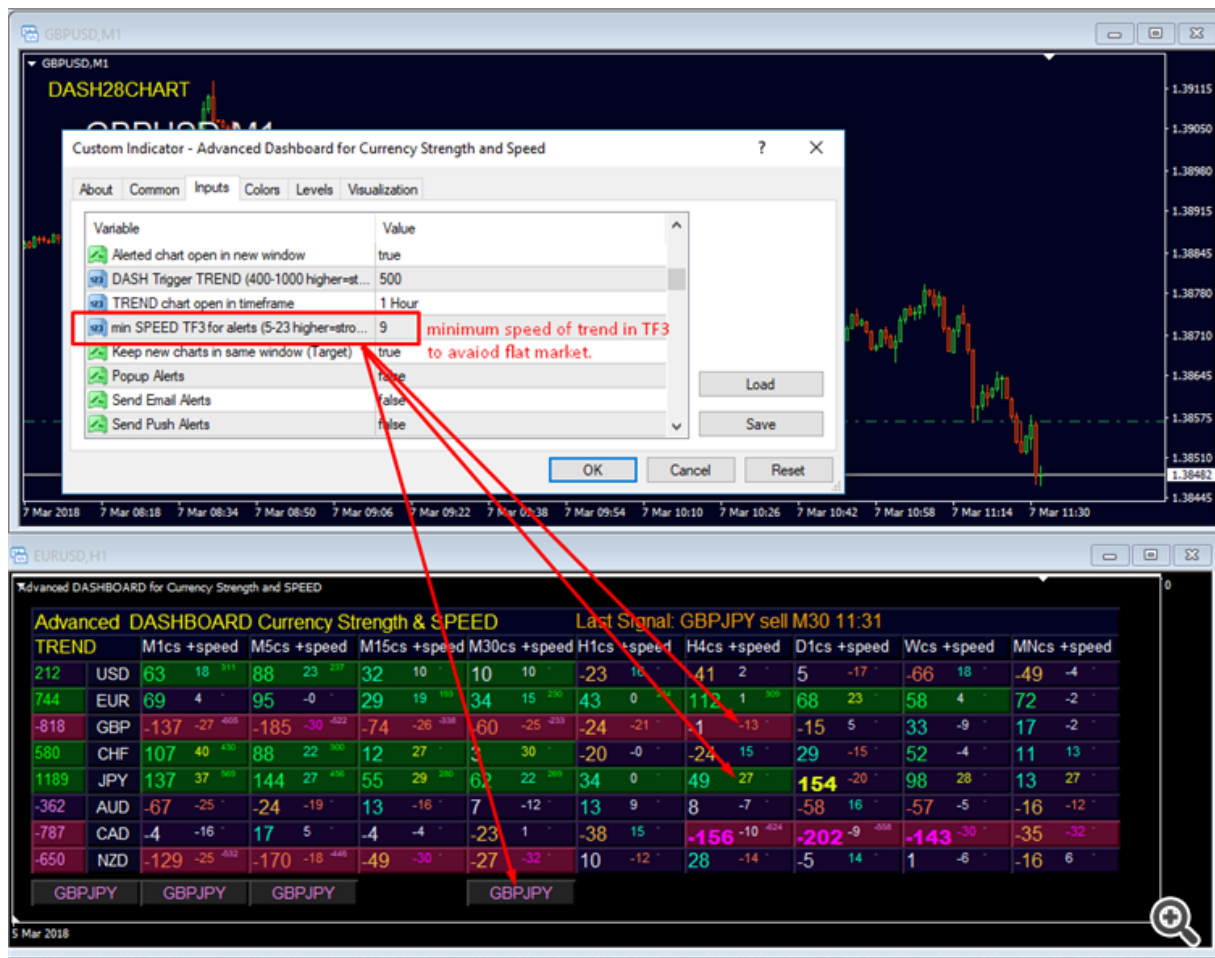
Extreme values are high lighted in bold.

(NEW with version 1.4)

A new filter for alerts added. A minimum speed of timeframe-3 is extracted. We want to make sure the trend in the higher timeframe is strong on both sides, which are the base and the quote currency speed.

New input:

- min SPEED TF3 for alerts (5-23 higher=stronger)



Exclude list for alerts added. This has been requested a few times from customers. If you do not want to receive alerts for pairs like NZDCHF or CHFJPY, then add it to the input with a comma-separated list. Example: NZDCHF,CHFJPY

(NEW with version 1.4)

New input:

- Comma separated pair exclude list (no alert)

NEW: Version 1.5

A new filter for alerts for the lower timeframes M1 M5 M15 added. A minimum speed of timeframe H4 will be checked to include a better trend. For scalping on the lower timeframes, we want to make sure of a speed in the higher timeframe H4 on both sides, which are the base and the quote currency H4 speed. A full block until H4 is not required. This will allow H4 inside-GAP.

New input:

- add H4 speed for M1 M5 M15 alerts (0=not)
The value of the input will represent the minimum speed of H4 timeframe to be required for an alert of the above mentioned lower timeframes. Use 0 to disable.

Made several compatibilities to use with the strategy tester. (But regarding the demo you need still to download all chart data manually before any testing. [comment 18+19.](#))

The new input filters for signals on M1, M5, M15.

Variable	Value
Alerted chart open in new window	true
Keep new charts in same window (Target)	true
DASH Trigger TREND (400-1000 higher-str...	500
TREND chart open in timeframe	1 Hour
min SPEED TF3 for alerts (5-23 higher=stren...	8
add H4 speed for M1 M5 M15 alerts (0=not)	14
Popup Alerts	true
Send Email Alerts	false

change for minimum speed H4

How does the new filter work:

In picture below H4 speed does not support the M1 signal. We still see the 3-blocks still in highlighted color M1+M5+M15 on USD+NZD but no signal button or alert appear because the H4 speed does not agree or is too low.

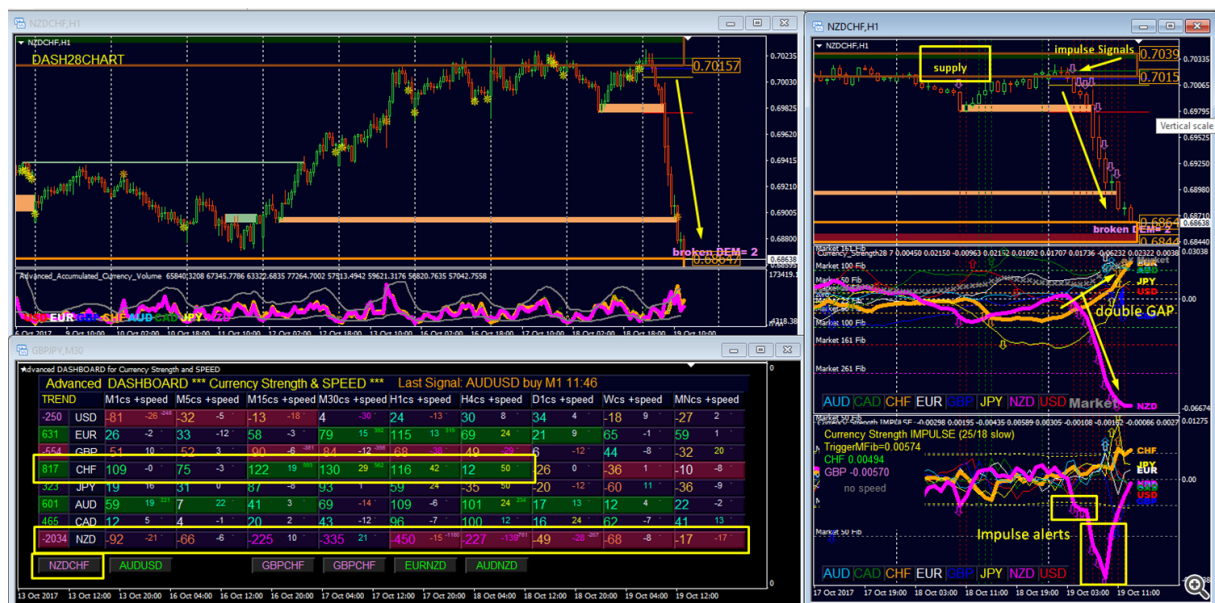


How Advanced Dashboard for Currency Strength and Speed works together with my other indicators as a complete trading system.

Do not miss out on the best trade opportunities!

Get the whole Market Overview with the dashboard and then check further your trade setups on the chart.

The picture below shows an example set of charts saved in a personalized Profile.



The move in above picture made 150 pips in a few hours.

Similar indicators

Get the trend and reversal levels with Advanced Currency Strength28 Indicator (MT4)

ACS28 user manual: <https://www.mql5.com/en/blogs/post/697384>

<https://www.mql5.com/en/market/product/13948>

INDICATOR PARAMETER SETTINGS/OPTIONS

- link for user manual (this block)

Variable	Value
link for user manual	https://www.mql5.com/en/blogs/post/708783

=== Currency Strength TF Settings

- Extreme Level M1 (Extreme Color Level Per time-frame. See below color code.)
- Extreme Level M5
- Extreme Level M15

- Extreme Level M30
- Extreme Level H1
- Extreme Level H4
- Extreme Level D1
- Extreme Level W
- Extreme Level MN

ab	=====	===== Currency Strength TF Settings =====
123	Extreme Level M1	261
123	Extreme Level M5	200
123	Extreme Level M15	161
123	Extreme Level M30	150
123	Extreme Level H1	138
123	Extreme Level H4	123
123	Extreme Level D1	112
123	Extreme Level W	100
123	Extreme Level MN	100

=== Alert Settings (Important inputs in red for the traders preference.)

- **Alerted chart open in new window** (false: To change the pair on same chart. True: is to be used with chart windows mode "RESTORE DOWN" <http://prntscr.com/gv3n1d> . Check profile in comment 1.)
- Keep new chats in same window (Target) (Use a target chart for all buttons. To use the input true "open in new window" must be set to true. New charts will apply in one same target window where you can add additional indicators. To change the pair on the target window, click the (2) currency names. Click (2) currencies build a pair. [Example: Click GBP and JPY to change the chart to GBPJPY also the alert button will open in same target window] or click on an alert button. You can use any of your own charts as target window if you add one object with the name "DASH28CHART". Do not use 2 such charts. If there is no such chart the indicator will open one. Manage your MT4 chart windows! Do not use window mode "Maximize", use "Restore Down" instead.
- DASH Trigger TREND (400-1000 higher=stronger) (minimum value for Trigger TREND alert)
- TREND chart open in timeframe (Choose the time-frame to open chart with signal button TREND alert)
- **min SPEED TF3 for alerts** (5-23 higher=stronger) (NEW with version 1.4 filter with higher timeframe speed.)
- **add H4 speed for M1 M5 M15 alerts** (0=not) (The value of the input will represent the minimum speed of H4 timeframe to be required for an alert of the above mentioned lower timeframes. Use 0 to disable.)






ab	=====	===== Alert Settings =====
	Alerted chart open in new window	true
	Keep new charts in same window (Target)	true
	DASH Trigger TREND (400-1000 higher=stronger)	500
	TREND chart open in timeframe	1 Hour
	min SPEED TF3 for alerts (5-23 higher=stronger)	8
	add H4 speed for M1 M5 M15 alerts (0=not)	14

- Popup Alerts
- Send Email Alerts
- Send Push Alerts
- Alerts for TREND Strength (Default true) (Alerts Options for M1, M5, M15, M30, H1, H4 and D1 Strengths. Choose which timeframe you want to be alerted. If there is a signal it will draw anyway a button.)
- Alerts for M1 Strength (Default false)
- Alerts for M5 Strength (Default false)
- Alerts for M15 Strength (Default false)
- Alerts for M30 Strength (Default true)
- Alerts for H1 Strength (Default true)
- Alerts for H4 Strength (Default true)
- Alerts for D1 Strength (Default false)
- Last Signal time is Local or broker time (Last Signal Message printed on top will be with your computer time or broker time=false)















	Popup Alerts	true
	Send Email Alerts	false
	Send Push Alerts	false
	Alerts for Total Strength	true
	Alerts for M1 Strength	false
	Alerts for M5 Strength	false
	Alerts for M15 Strength	false
	Alerts for M30 Strength	true
	Alerts for H1 Strength	true
	Alerts for H4 Strength	true
	Alerts for D1 Strength	false
	Last Signal time is Local or broker time	false

=== Color Settings











- Use of Simple Colors (Bear and Bulls. Only 2 colors for positive and negative values will be used.)
- Simple bull Color
- Simple bear Color

ab	=====	===== Color Settings =====
	Use of Simple Colors	false
	Simple bull Color	 Lime
	Simple bear Color	 Violet











- Color C-Strength strong extreme (7 Strength color codes)
- Color C-Strength stronger
- Color C-Strength strong
- Color C-Strength neutral
- Color C-Strength weak
- Color C-Strength weaker
- Color C-Strength weak extreme

	Color C-Strength strong extreme	 223,252,20
	Color C-Strength stronger	 3,252,84
	Color C-Strength strong	 0,255,185
	Color C-Strength neutral	 Lavender
	Color C-Strength weak	 244,190,64
	Color C-Strength weaker	 249,117,72
	Color C-Strength weak extreme	 Magenta

- Color SPEED stronger (5 Speed color codes)
- Color SPEED strong
- Color SPEED neutral
- Color SPEED weak
- Color SPEED weaker












	Color SPEED stronger	 223,252,20
	Color SPEED strong	 0,255,185
	Color SPEED neutral	 Lavender
	Color SPEED weak	 249,117,72
	Color SPEED weaker	 Magenta

- Panel TOP background Color (background color codes)
- Panel DASH background Color NEUTRAL
- Panel DASH background Color BEAR (signal color of highlighted blocks)
- Panel DASH background Color BULL (signal color of highlighted blocks)
- Background Color button

	Panel TOP background Color	 2,3,34
	Panel DASH background Color NEUTRAL	 21,5,45
	Panel DASH background Color BEAR	 95,12,47
	Panel DASH background Color BULL	 1,65,10
	Background Color button	 8,8,34

=== Other Settings

- use currency specific characteristics (each currency will be handled by its own)
 - Auto open of 7 support charts! (SPECIAL: Automated MT4 history updates with background charts! This charts are for updating external currency quotes. Remove all indicators from this chart. Keep it minimized.)
 - Run support charts all timeframes! (Update for all 28 pairs in all timeframes. On a separate chart, it will go through all pairs and ALL timeframes with a schedule. External chart data should be CONTINUOUSLY be updated.)
 - (NEW with version 1.3) autofit pixel 4K (blocks will widen if a chart have over 1080 pixel.)
 - Font spacing X (big screen) (Pixel correction for blocks horizontal)
 - Font spacing Y (vertical)
 - Start Dash pixel X (Pixel correction for dashboard position)
 - Start Dash pixel Y
 - Label font
 - Label font2
 - CS label size (For header, message and CS-values)
 - SPEED label size (For SPEED and highlighted block rating)
-
- Font size alert button
 - Comma separated pair exclude list (no alert) Excluded pairs will not be alerted. The button will still appear.
 - use PIN VALUES (possible use: EA import)
 - use PIN2 SIGNALS (possible use: EA import)
 - Force objects to subwindow number (0=auto)
 - Add 1 Symbol (e.g. XAUUSD or US30)

ab	=====	==== Other Settings
	use currency specific characteristics	true
	Auto open of 7 support charts!	true
	Run support charts all timeframes!	true
	autofit pixel 4K	true
	Font spacing X manual (big screen)	1.0
	Font spacing Y	1.05
	Start Dash pixel X	15
	Start Dash pixel Y	25
ab	Label font	Arial
ab	Label font 2	Arial Black
	CS label size	10
	SPEED label size	8
	Font size alert button	10
ab	Comma separated pair exclude list (no alert)	

Version 3.7 released

We are thrilled to announce the release of our latest dashboard update! This update includes a new horizontal row that displays additional strength and speed values for gold or indices. This new feature functions similarly to our popular "Currency Strength EXOTICS" indicator, which utilizes 28 pairs plus one.

Additionally, we have added a new input parameter that allows you to add one symbol (such as XAUUSD or US30) to your dashboard. This provides even more flexibility in customizing your trading strategy. To check for the new input, please scroll down the parameters until the end.

New input:

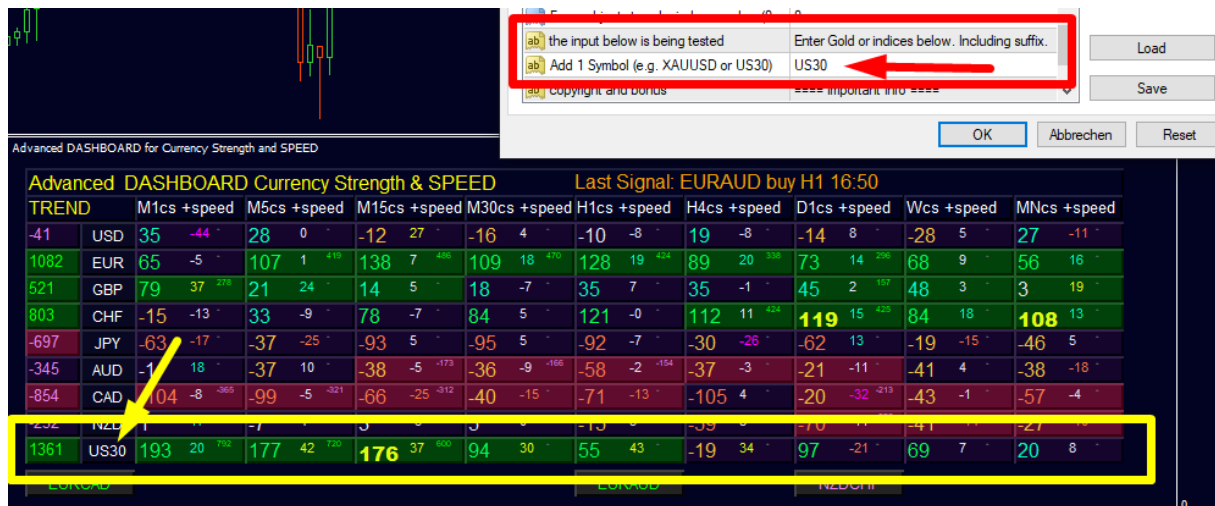
- Add 1 Symbol (e.g. XAUUSD or US30)

Please note that while this update includes alerts for 28 Forex pairs, alerts for Gold are not yet available. However, we are continuously working to improve our services and will be adding Gold alerts in the near future.

We recommend that you run the dashboard on EURUSD.

Don't miss out on this powerful tool that gives you an edge in your trading strategy. Upgrade your dashboard today and take your trading to the next level!





Tips

1. Use my template and profiles (See below)
2. Trade with the higher time-frame trend, trade weak against strong currencies and if the currency is extreme a color and speed it is inverted, check for a pullback trades
3. Study the complete trading system, read my news and blocks for trading system examples

I will always help you if you have any questions, just PM me for questions or to receive the latest information.

May there be many green pips in your near future.

Best regards,

Bernhard

Version 1.4 released with a special speed filter and a pair-exclude-list for alerts!

Version 1.5 released with a special H4 speed filter for lower timeframes.

Specials !

Discounts are available for MT4 versions, now.

Sale has started!

Profit now with a lower price. Limited offer with discount MT4.

Original Price: ~~250\$~~

Discounted Price: 199\$

With discount 20% OFF!

Get it now!

MT4 [CLICK HERE](#)

I will always help you if you have any questions.

For more details and questions email me at bernhardfxcontact@gmail.com

www.CurrencyStrength28.com

THIS MANUAL WILL BE continuously be UPDATED !! So check again.

READ ALSO THE NEXT 20 COMMENTS.

[#trading system](#), [impulse](#), [indicator](#), [Currency Strength](#), [Dashboard](#), [manual](#), [user guide](#), [Strength28](#)

[Source](#) · [Like17](#) · [Your comment](#)



80711

[Bernhard Schweigert](#) 2017.10.03 14:07 [#1](#)

Frequently asked questions:

The BLOCK per time frame and currency contains: 1st number=currency strength, 2nd number Speed, 3rd number 3-block rating*.

Advanced DASHBOARD for Currency Strength and SPEED

Advanced DASHBOARD *** Currency Strength & SPEED ***											
TREND		M1cs +speed			M5cs +speed			M15cs +speed			M30cs
65	USD	33	-32	-	38	-	-	-13	12	-	-20
17	EUR	-55	0	-	-65	-13	-183	-35	-3	-121	-28
295	GBP	30	-5	-	35	4	-	-5	8	-	-11
345	CHF	16	50	-	-11	21	-	17	-5	-	45
470	JPY	-12	17	-	-13	-16	-	19	3	-	66
-439	AUD	10	-30	-	21	-6	-	9	3	-	-9
-242	CAD	-35	-11	-	-49	25	-	-14	-18	-	-26
-512	NZD	12	11	-	45	-7	-	21	-0	-	-17

NZDJPY

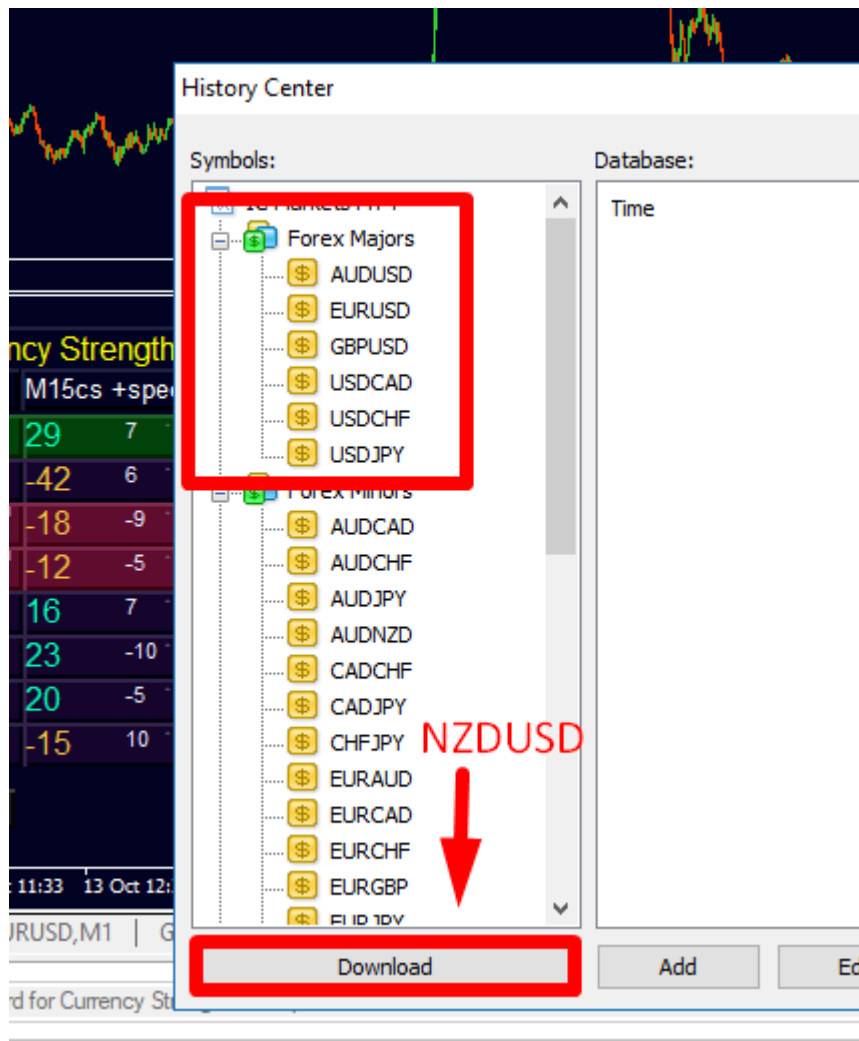
If blocks of 3 TFs are highlighted a 3 timeframes agree in direction, then check if there is a buy or sell-move. Avoid flat market if speed or rating is small. Then check if CS (1stnumber) is already higher than 100 or lower than -100. Then it is advised to wait with an entry after a pullback happened.

* (The 3rd number is a technical value of the 3-block rating. The dashboard is using it to find the strongest and weakest currency for a possible alert.)

The DEMO

If you want to test the [demo via strategy tester](#) make sure to **download following chart data** via MT4 first.

All USD-pairs: AUDUSD, EURUSD, GBPUSD, NZDUSD, USDCAD, USDCHF, USDJPY.



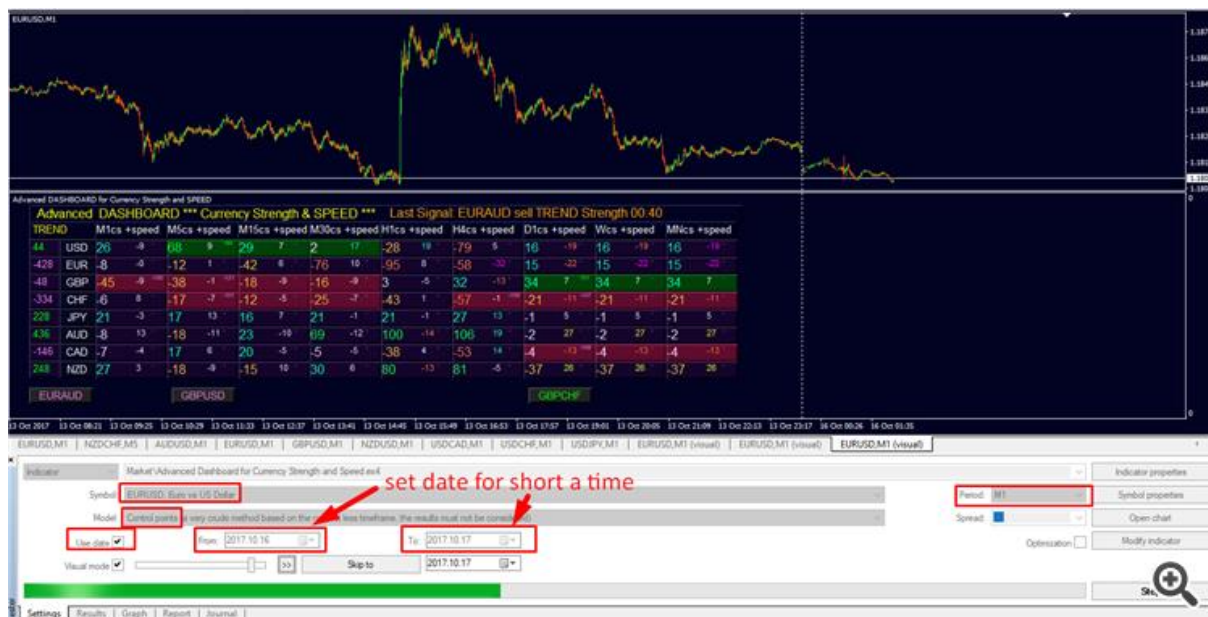
To open History Center press F2.

Open folder Forex Majors and Forex Minors.

Download all Forex Majors: AUDUSD, EURUSD, GBPUSD, USDCAD, USDCHF, USDJPY.

Then check Forex Minors and download NZDUSD.

Now try to test the demo on EURUSD M1.



- Copy attached template into your templates folder! (download below this comment)
- Open all USD-pairs in the same time frame to load history.
- Choose Symbol and TF (best M1 EURUSD)
- Choose time with max 1000 bars back until today. (Try the first time only from date yesterday until today!)
- Set speed or pause
- Drag sub-window bigger

Email me if you need help. (bernhardfxcontact@gmail.com)

One **example PROFILE** is attached below this comment. It includes the dashboard, the target chart, the higher TF chart, the update charts. If you own the other of my indicators they will apply on those charts.



What you must do to make this profile yourself:

1. Check the video and use target chart. Only add the dashboard to one chart.
2. Set dash input "open in new chart" = true.
3. Use windows mode "RESTORE DOWN" <http://prntscr.com/gv3n1d>
4. Click the small ones (for the chart) and not the big ones (for MT4).
5. Or try one of those menu <http://prntscr.com/gv3ory>
6. Click a button or 2 currency buttons. The dash opens a chart with the object DASH28CHART.
7. Place and resize the windows to fit with your screen so you can see both.
8. Now the buttons will change pair and TF in that target chart and the dash-chart remains unchanged.
9. After that put any other indicators on that target-chart.

After dashboard installation use attached PROFILE "DASHBOARD ACS SPEED" as an example for target chart mode.

More as 8 "update quote chart"?

The letters in red color tells it is not from the dashboard initiated but from ACS28 or impulse. If you run the dashboard on any chart it will handle all update quotes. Then you can turn off (=false) the "open support charts" function on ACS28 and Impulse. Now you can close those charts.

This is all basic stuff. How to install a profile. Follow these steps:

1. Unzip DASHBOARD ACS SPEED.zip
2. and copy "DASHBOARD ACS SPEED"-FOLDER! (Do not copy the inside files! Do not open them! Copy the complete folder.)
3. Now open your MT4 platform. <http://prntscr.com/9pk6bp> (screenshot)
4. Click on File
5. Click on Open Data Folder
6. Open Profile folder
7. Paste the copied complete folder into "Profiles" folder.
8. Restart your MT4!
9. Now you find the new profile in your MT4 profiles list.
10. Minimize eventually update quote charts if they are visual.

11. Eventually, resize chart windows to your screen by dragging with the mouse. (Do not maximize windows.)

Then send me a screenshot to check if all looks good.

If you need help with installation we can meet on Skype or TeamViewer.

(Download the profile-zip below this comment.)

If you have a **big 4k monitor** use this inputs to correct pixel:

==== other settings

- autofit pixel 4K (blocks will widen if a chart have over 1080 pixel.)
- Font spacing X (big screen)
- Font spacing Y (big screen)
- Start Dash pixel X
- Start Dash pixel Y
- CS label size
- SPEED label size
- Font size alert button
- exclude list

ab	-----	==== Other Settings
use currency specific characteristics		true
Auto open of 7 support charts!		true
Run support charts all timeframes!		true
autofit pixel 4K		true
Font spacing X manual (big screen)		1.0
Font spacing Y		1.05
Start Dash pixel X		15
Start Dash pixel Y		25
Label font		Arial
Label font 2		Arial Black
CS label size		10
SPEED label size		8
Font size alert button		10
Comma separated pair exclude list (no alert)		

Make above values bigger and then press OK and repeat the process until it is good for you.

Now with **version 1.3 bigger screens are detected** (chart over 1080 pixel) and then the blocks will be widen.

The new input is below "other settings" called "autofit pixel 4K". This feature will be disabled if Font spacing Y is not = 1. The sub-window height will not be fixed if "autofit pixel 4K" is set to false. (The MT4 chart sub-window height will be fixed on first initialization. If you want to change the hight you might need to take the dashboard off the chart and add it again but change "autofit pixel 4K" before you click OK.) (Versions 1.5)

Exclude list for alerts: if you do not want to receive alerts for pairs like NZDCHF or CHFJPY, then add it to the input with a comma-separated list. Example: NZDCHF,CHFJPY

How to **download, update or install** the indicator go to Terminal / Market / Purchased within your MT4/5 (Ctrl+T).

Step by step instructions go here: Check the user manual for Impulse comment 7 on "How to install the indicator?"

https://www.mql5.com/en/blogs/post/697135#comment_5261974

Files:

[Tester.tpl](#) 5 kb

[default.tpl](#) 1 kb

[DASHBOARD_ACS_SPEED.zip](#) 11 kb



80711

[Bernhard Schweigert](#) 2017.10.03 14:11 #2

Following screenshots were taken within 2 hours in live Market.



80711

[Bernhard Schweigert](#) 2017.10.03 14:36 #3



80711

Bernhard Schweigert 2017.10.03 14:38 #4



80711

Bernhard Schweigert 2017.10.03 14:42 #5



80711

Bernhard Schweigert 2017.10.03 14:47 #6

The full set of my indicators





80711

Bernhard Schweigert 2017.10.03 14:53 #7



80711

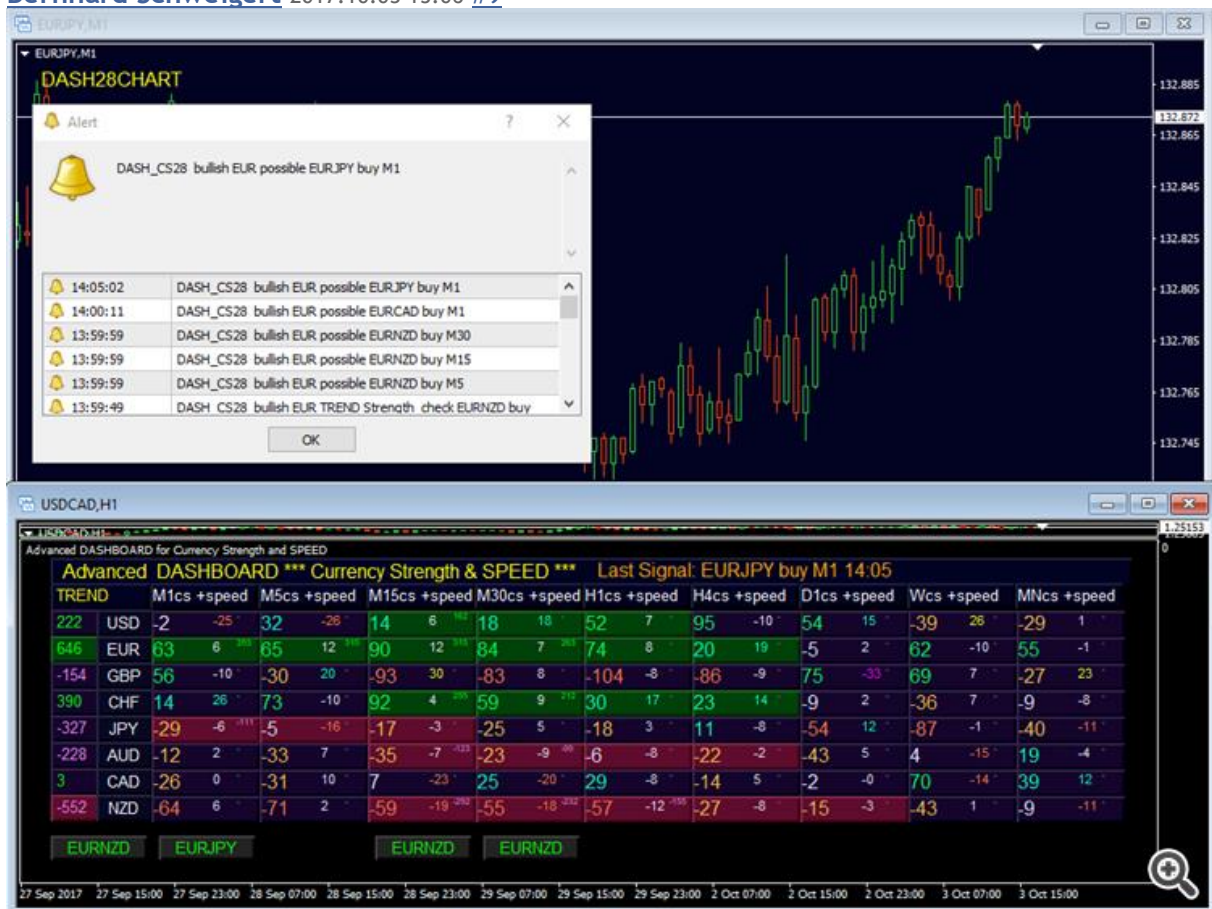
Bernhard Schweigert 2017.10.03 15:02 #8





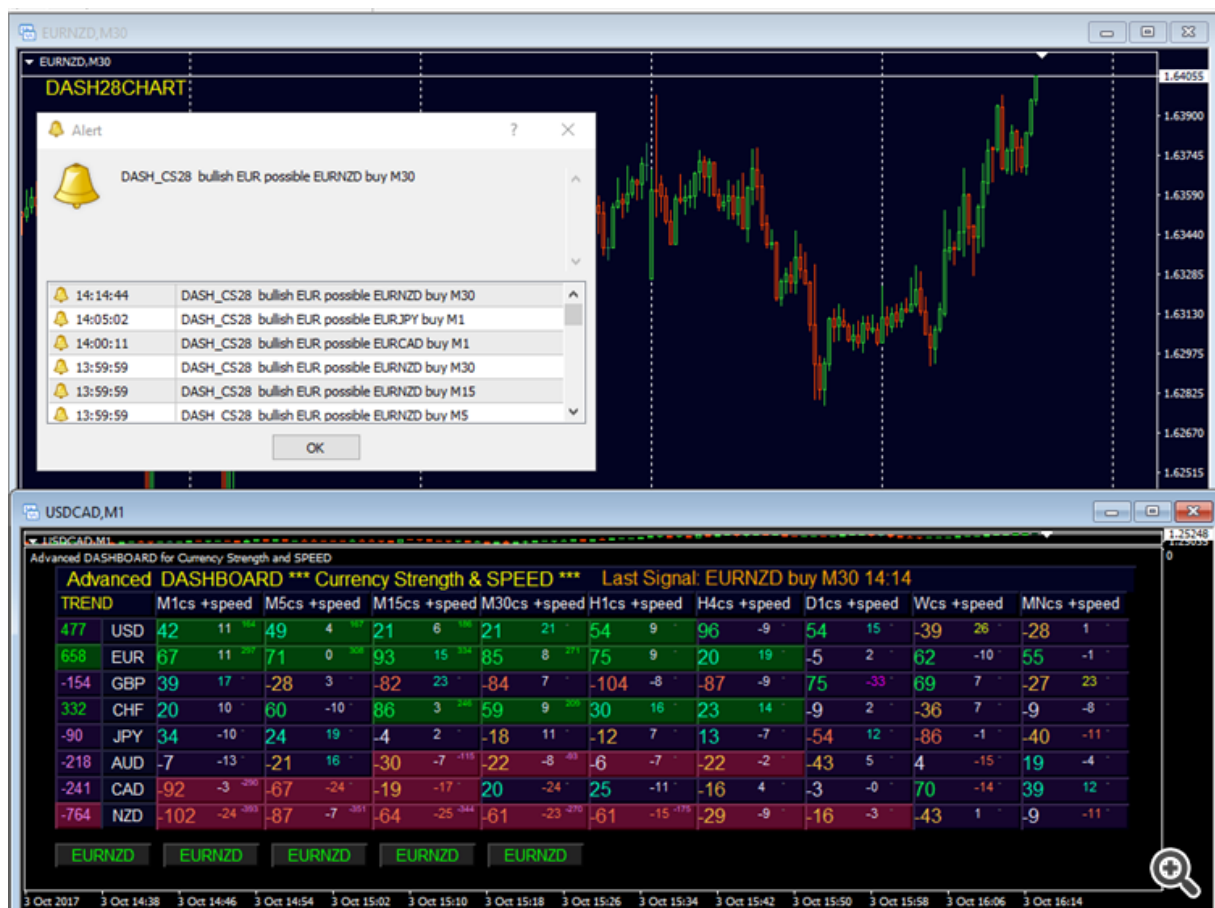
80711

Bernhard Schweigert 2017.10.03 15:06 #9



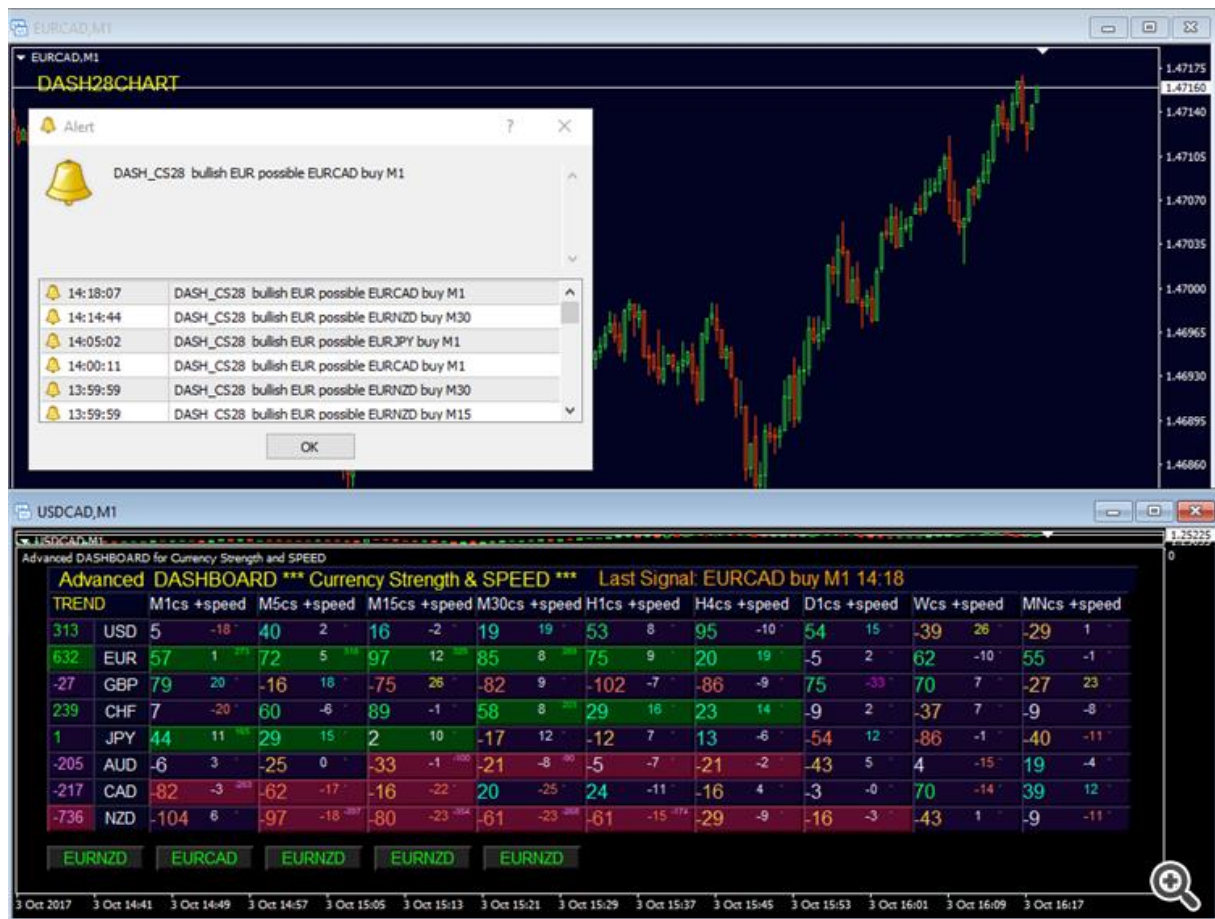
80711

Bernhard Schweigert 2017.10.03 15:16 #10



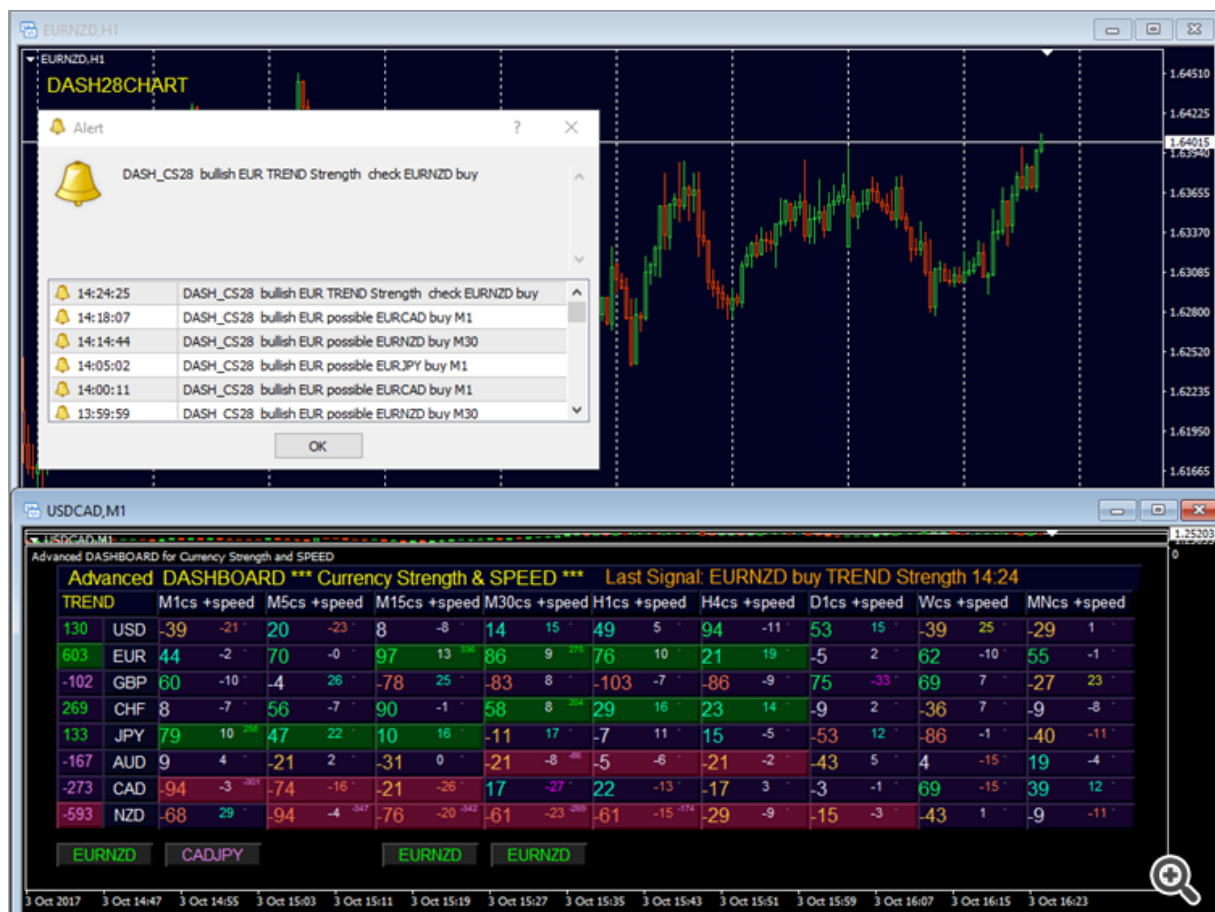
80711

[Bernhard Schweigert](#) 2017.10.03 15:19 #11



80711

Bernhard Schweigert 2017.10.03 15:25 #12

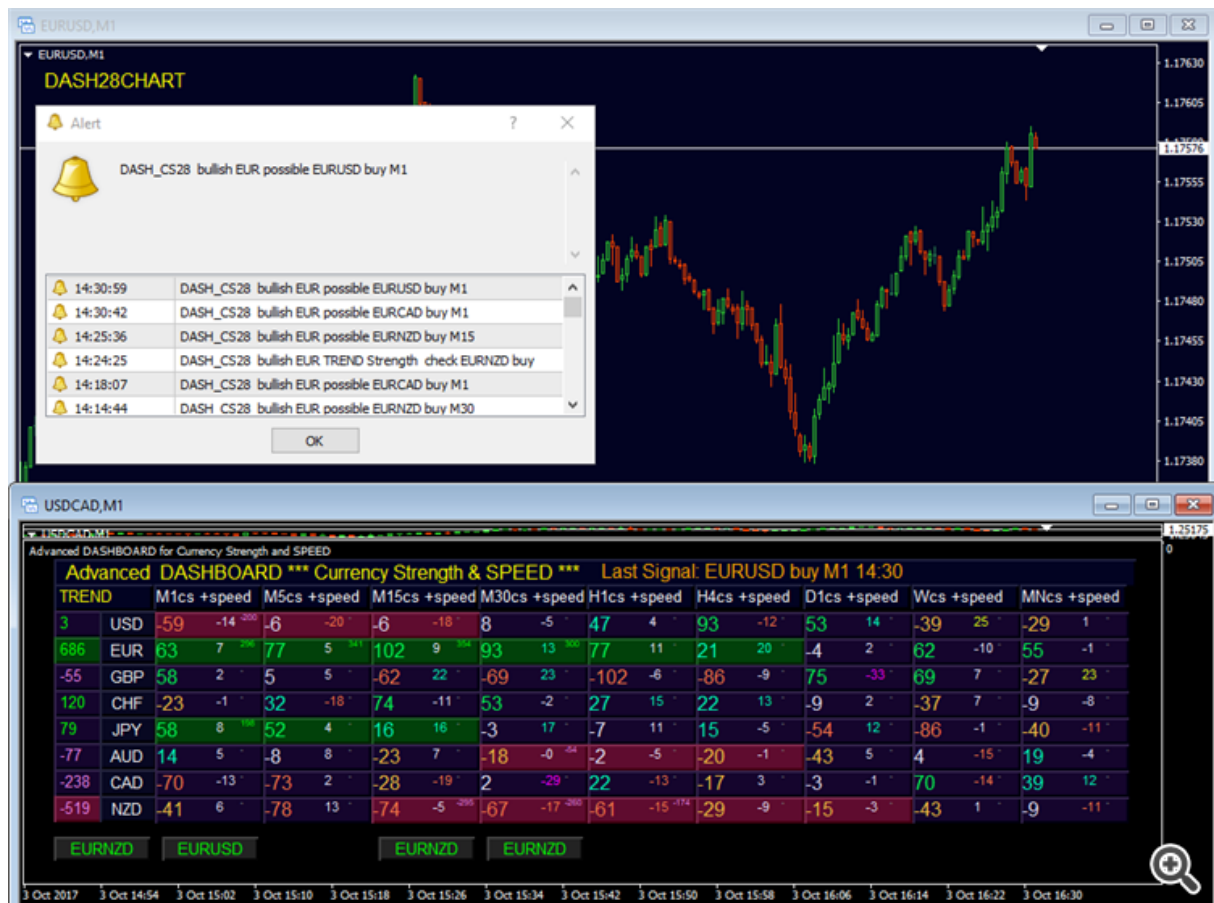


80711

[Bernhard Schweigert](#) 2017.10.03 15:34 #13

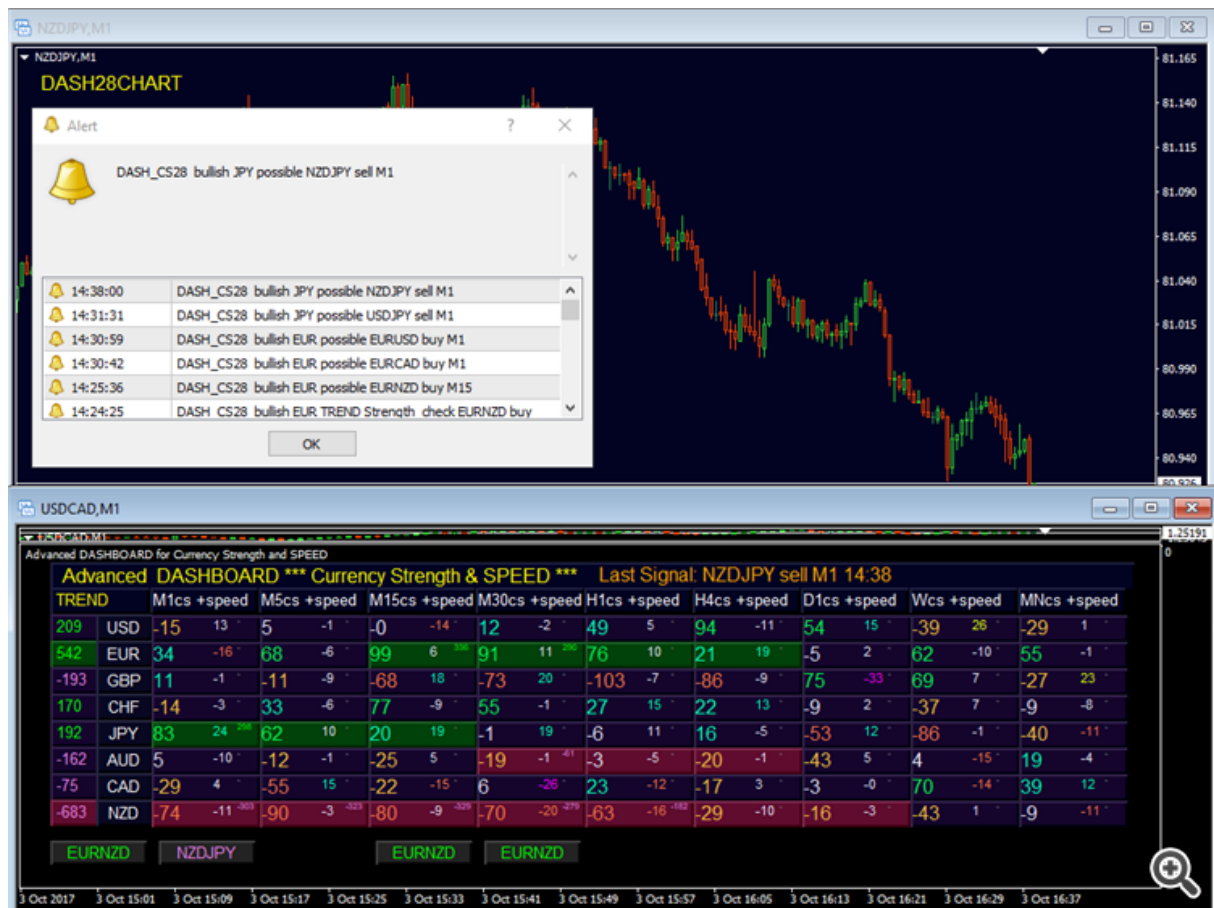
The scalpers paradise.

You need to turn on the alerts for M1, M5, M15 (by default it is off)



80711

[Bernhard Schweigert](#) 2017.10.03 15:39 #14
more M1

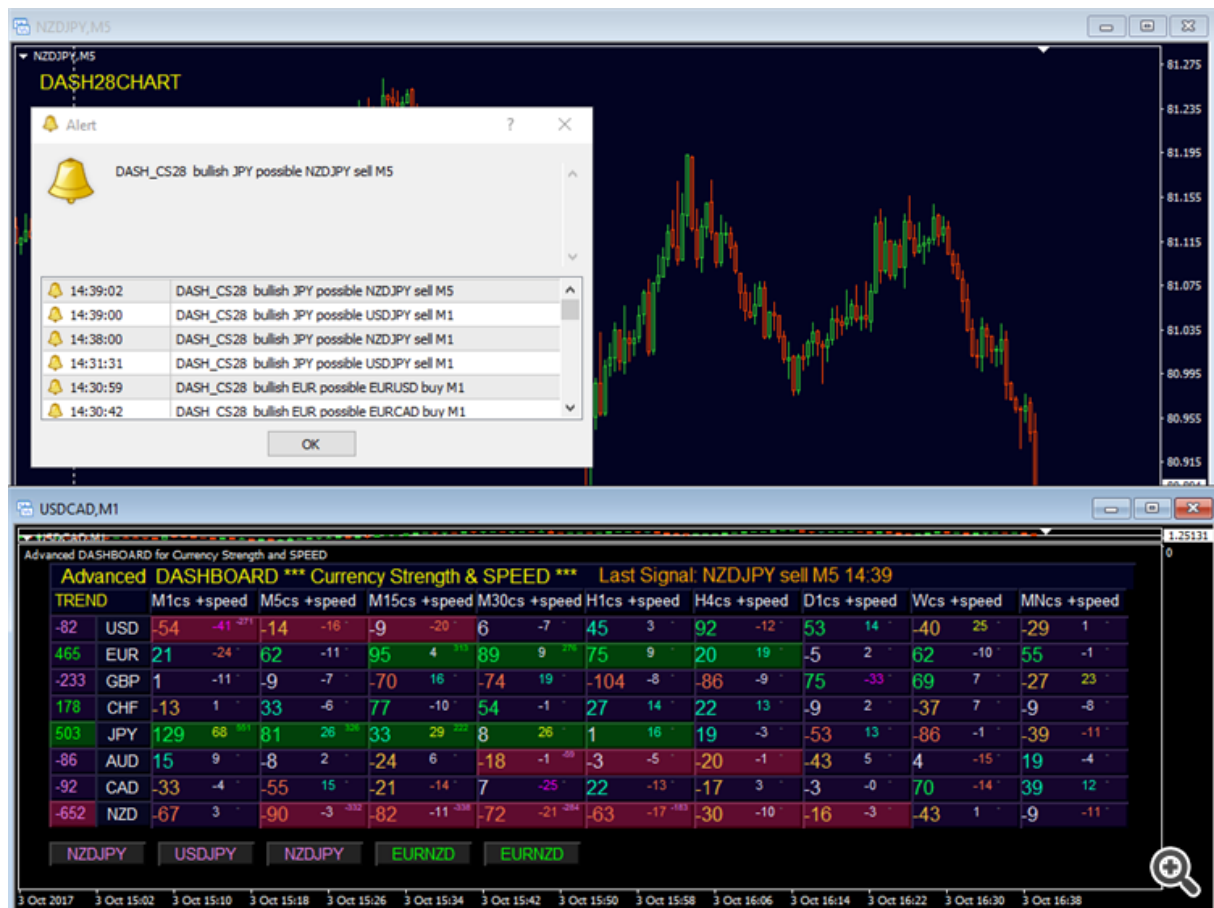


80711

[Bernhard Schweigert](#) 2017.10.03 15:41 [#15](#)
[Bernhard Schweigert](#):

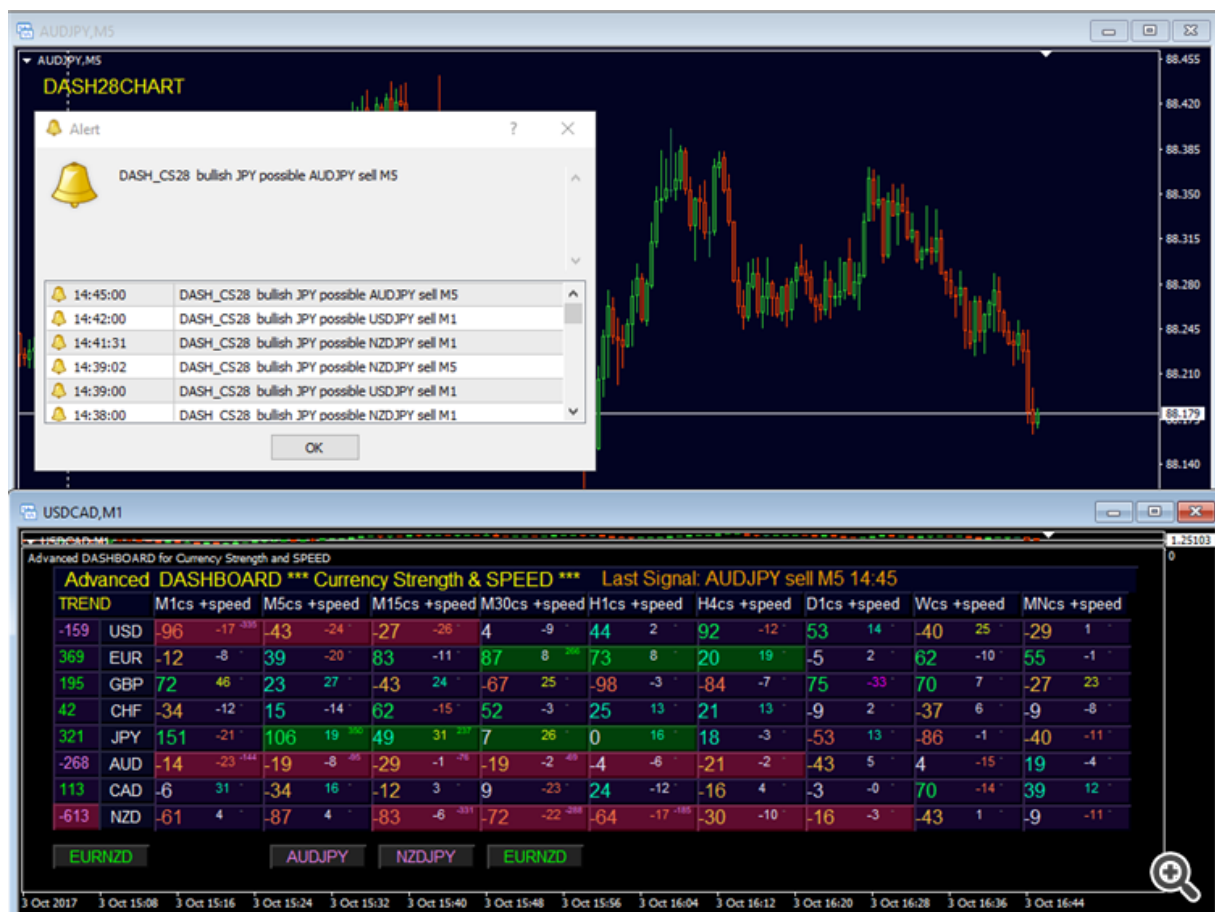
more M1

same M5 signal comes just a Minute later and it is 5 pips lower



80711

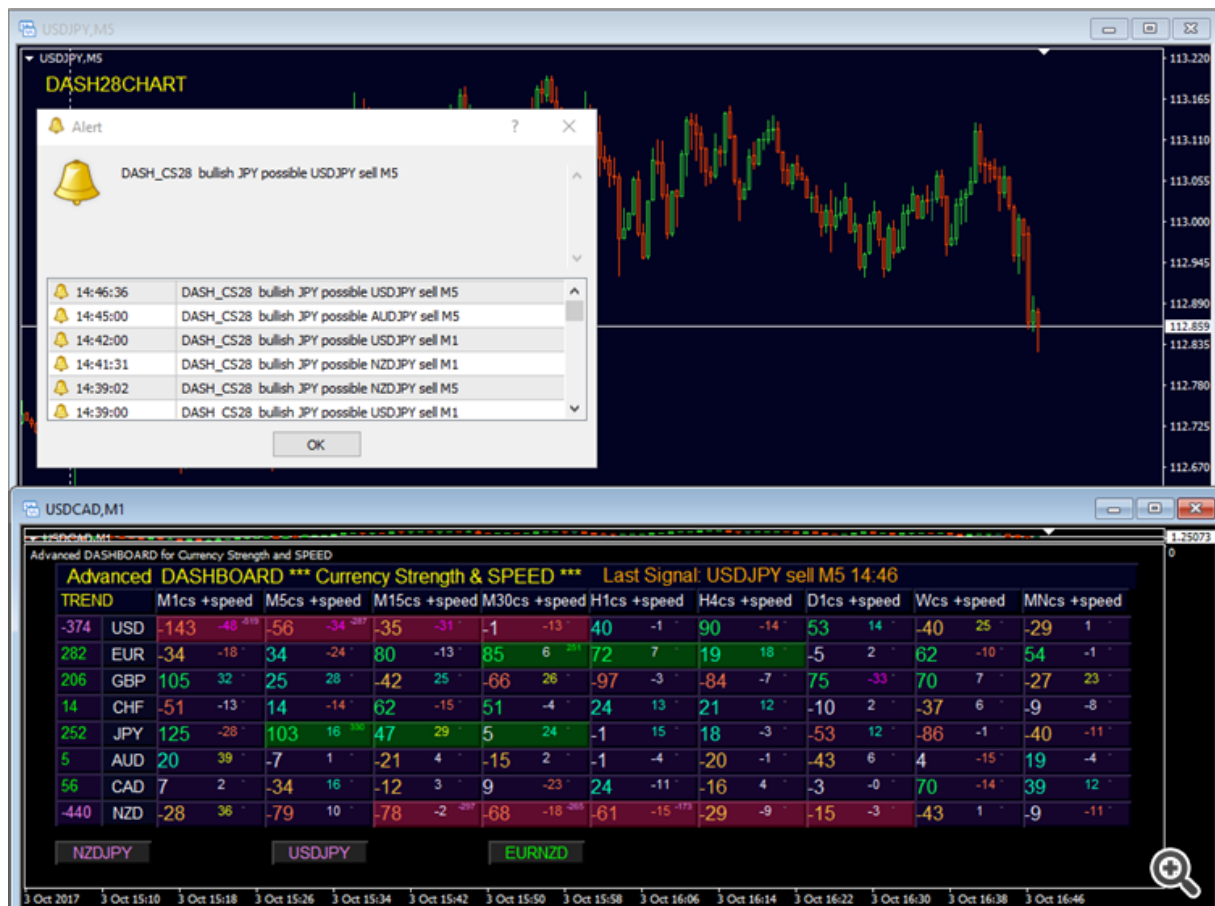
[Bernhard Schweigert](#) 2017.10.03 15:46 #16



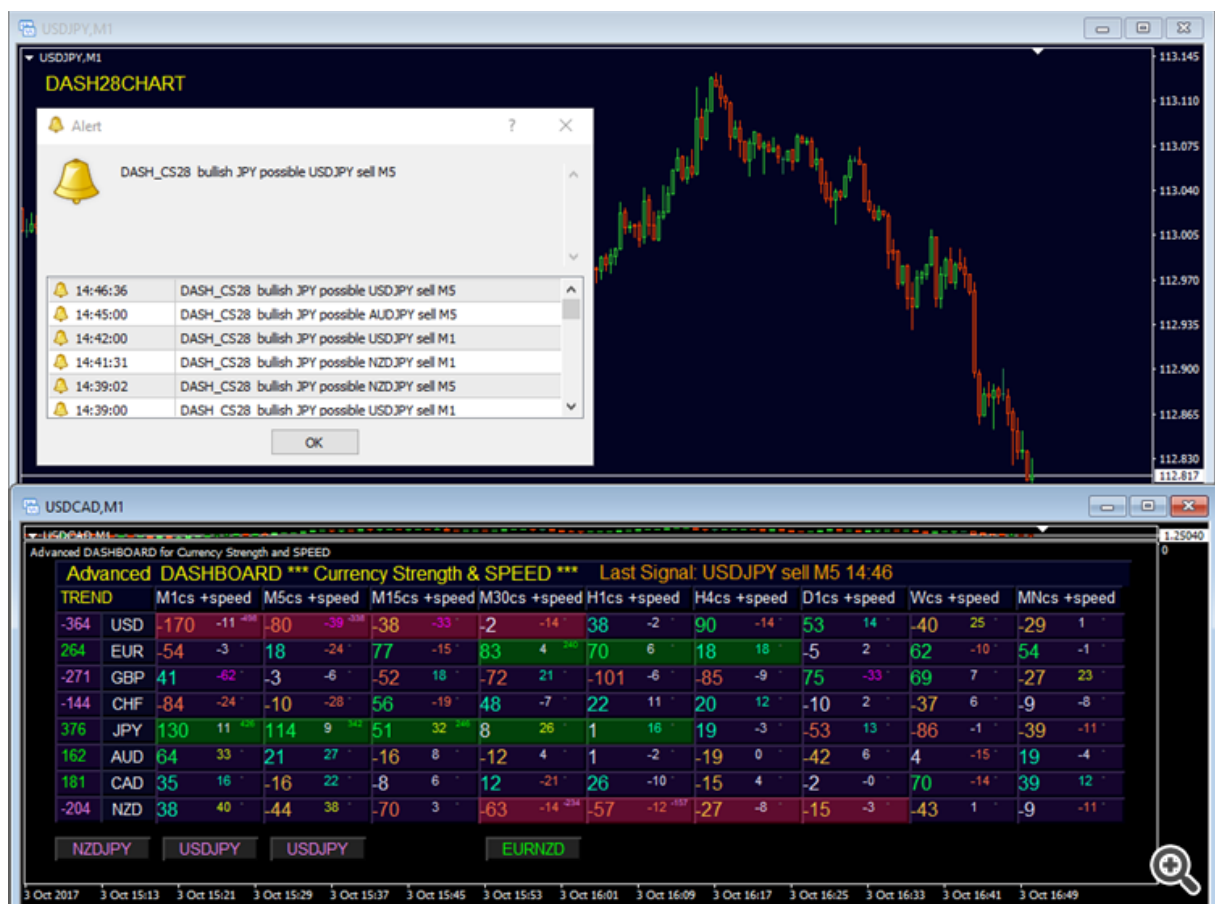
80711

[Bernhard Schweigert](#) 2017.10.03 15:53 #17

This signal was earlier on M1 too and is dropping like a stone. :)



M1

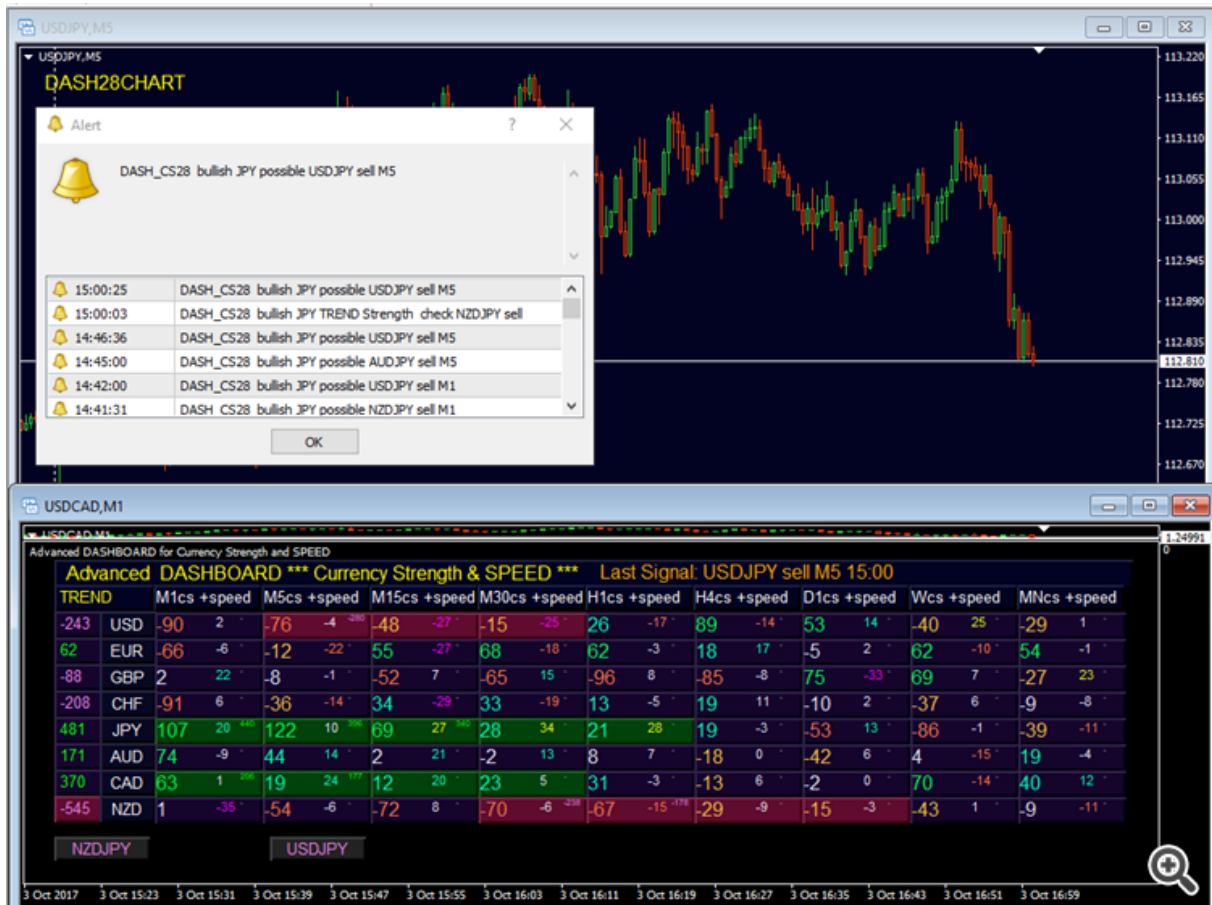


Pullbacks are expected when CS levels reaching higher then 161/261 of the Market Fibonacci levels which are printed in the dashboards first numbers. This might be a good time to take profits or to trail the SL into profit (like last high/low).



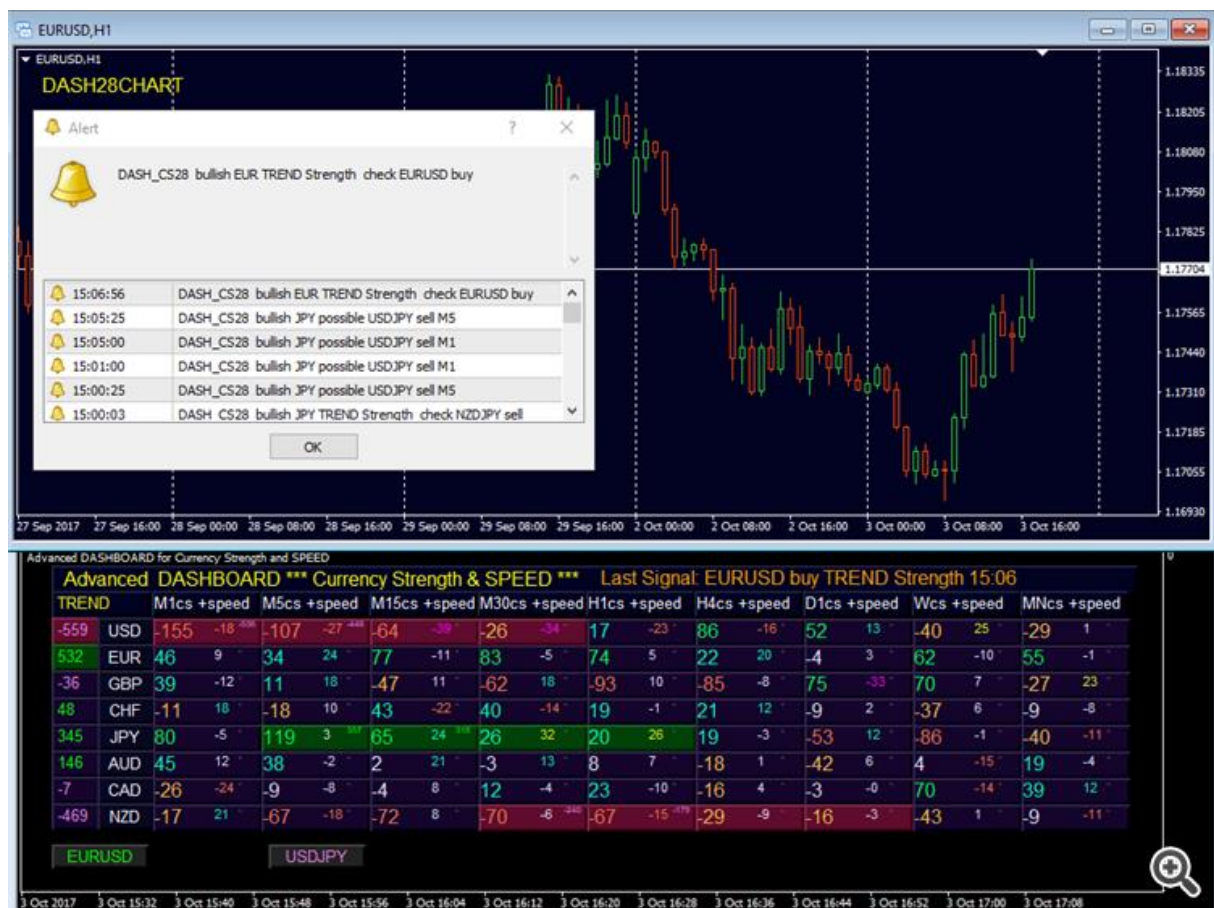
80711

[Bernhard Schweigert](#) 2017.10.03 16:03 [#18](#)
USDJPY Trend continues



80711

[Bernhard Schweigert](#) 2017.10.03 16:11 [#19](#)
EURUSD TREND is still up.



80711

[Bernhard Schweigert](#) 2017.10.03 16:31 #20

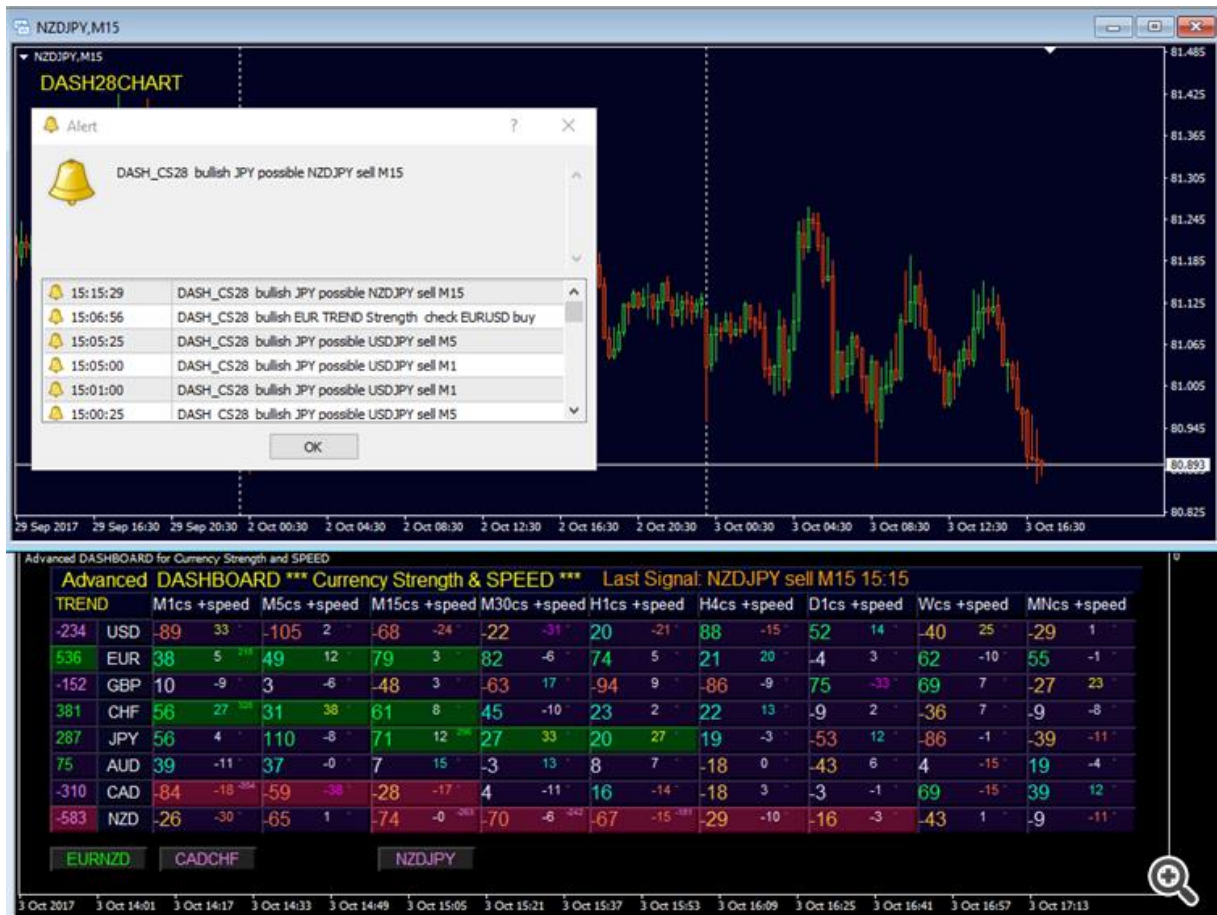
These screenshots were taken today within 2 hours live.

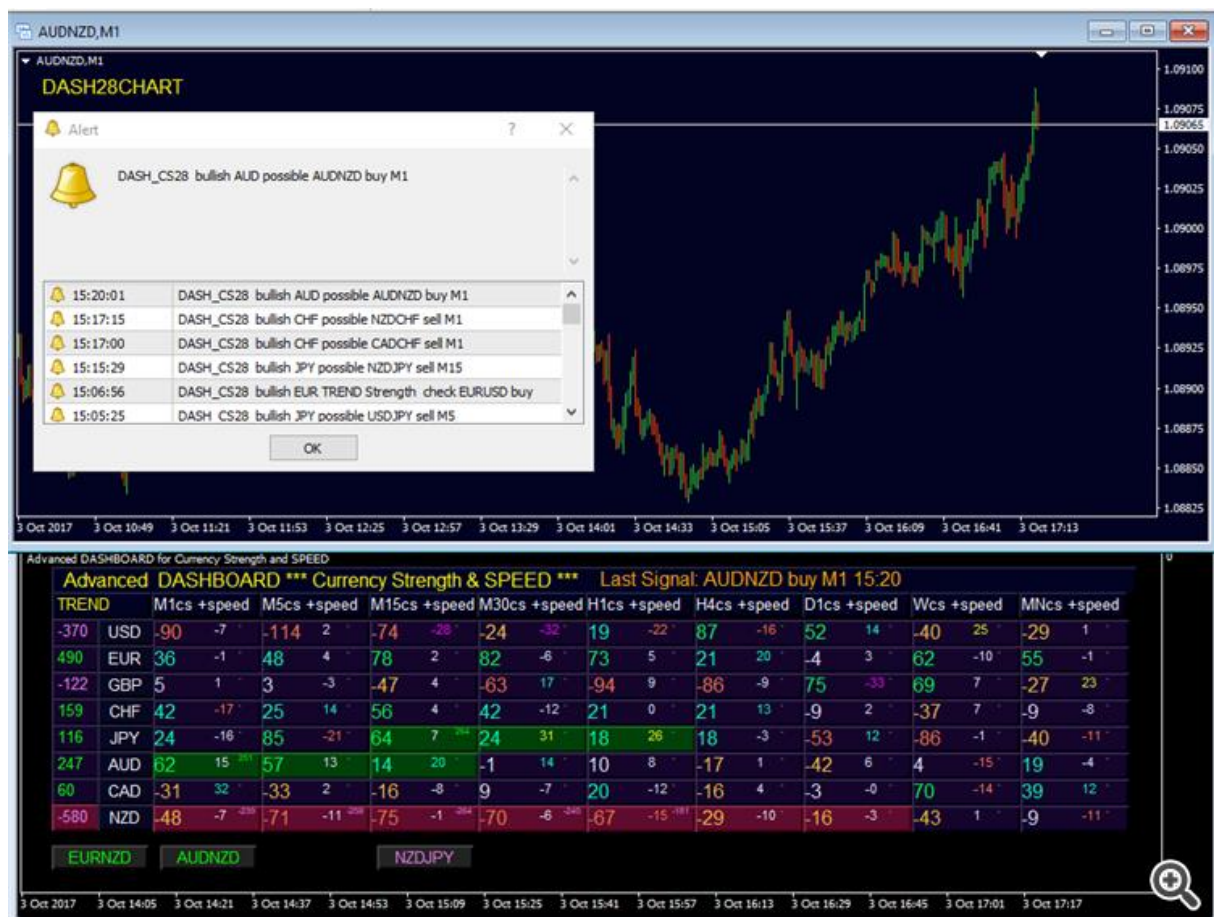
Get currency strength signals and currency speed/impulse signals on all 9 timeframes!

Have the whole Forex Market in an overview on only ONE chart!

Trade from ONE chart all 28 pairs and all timeframes!

Choose according to your trading style either trend continuations or reversals from the extreme levels.





This blog will be continuously be updated.